

# The Perspectives of Port Integration into the Global Supply Chains - The Case of North Adriatic Ports

---

Host, Alen; Pavlić Skender, Helga; Mirković, Petra Adelajda

Source / Izvornik: **Pomorstvo**, 2018, 32, 42 - 49

Journal article, Published version

Rad u časopisu, Objavljena verzija rada (izdavačev PDF)

Permanent link / Trajna poveznica: <https://um.nsk.hr/um:nbn:hr:192:584961>

Rights / Prava: [Attribution 4.0 International](#)/[Imenovanje 4.0 međunarodna](#)

Download date / Datum preuzimanja: **2024-11-20**



SVEUČILIŠTE U RIJECI  
**EKONOMSKI FAKULTET**

Repository / Repozitorij:

[Repository of the University of Rijeka, Faculty of  
Economics and Business - FECRI Repository](#)



Multidisciplinary  
SCIENTIFIC JOURNAL OF  
MARITIME RESEARCH



University of Rijeka  
Faculty of Maritime  
Studies Rijeka

Multidisciplinarni  
znanstveni časopis  
POMORSTVO

# The Perspectives of Port Integration into the Global Supply Chains – The Case of North Adriatic Ports<sup>1</sup>

Alen Host, Helga Pavlić Skender, Petra Adelajda Mirković

University of Rijeka, Faculty of Economics, Ivana Filipovića 4, 51000 Rijeka, Croatia, e-mail: alen.host@efri.hr; helga.pavlic.skender@efri.hr; petra.adelajda.mirkovic@efri.hr

## ABSTRACT

Globalization, offshoring and the notable growth of containerization have changed the maritime transport and logistics chains. Ports became integral part of complex supply chains and serve as a logistics centres, add value, link flows and influence the supply chain patterns and processes. The port competitiveness is determined by its in-house strengths such as efficient freight handling and hinterland connections and by its position and links in the global supply chains. The aim of this paper is to investigate the importance of port integration in the supply chains overall and to analyse how North Adriatic Ports are integrated into the supply chains. The analysis is based on the sample of 939 firms aggregated by ports regions and classes level within Section H (Nace Rev.2). The assumption is that if the business cycle of all firms (classes) included in the port supply chain is correlated, it can indicate that the port is integrated in the supply chain. The results of our analysis are ambiguous, where the correlation is rather negative than positive. This paper provides the conceptual framework and outline the significance of this investigation for port operators, shipping lines, forwarders and other stakeholders.

## ARTICLE INFO

Review article  
Received 2 May 2018  
Accepted 28 May 2018

### Key words:

Port integration  
Global supply chains  
North Adriatic ports  
NAPA

## 1 Introduction

During the last two decades, ports have transformed their role from the traditional regional gateways to the place where essential value adding, and logistics activities are taking place. Ports became integral part of a complex supply chains, serve as a logistics centers and influence the supply chain patterns and processes. Ports have played, and will continue to play, much more decisive roles in the sustainability of logistics and supply chains. Out of the numerous nodes in global supply chains, ports play an essential role in enabling the continuous flow of shipments between supply chain entities.

An increasing volume of research focuses on port integration into supply chains and its impact on port performance and competitiveness, however a little empirical

evidence exists in the case of North Adriatic ports. Thus, the purpose of this papers is to examine the North Adriatic ports (hereinafter NAPA) integration into the global supply chains and to analyse the perspectives of its integration.

From 2004 onwards, as the European Union started to grow eastwards, the role of re-assessment of port hinterland relationship became the core component in freight distribution (Notteboom and Rodrigue, 2007). The significant production facilities in the countries of Central and Eastern Europe have been established and thus the port integration of NAPA ports is supply chain became even more important.

It is noticeable that the NAPA ports are improving their connections with hinterlands, logistics infrastructures and inland transportation. Furthermore, instead of just cargo loading and unloading, North ports, especially Port of Koper are providing more diversified, and value-added services. However, NAPA ports should strengthen their connections with inland market, transport and logistics infrastructures, especially dry ports, in order to enhance their competitiveness. The NAPA ports should be able to

<sup>1</sup> This research has been supported by the University of Rijeka (UNIRI), project Transport and logistics in the function of incorporating firms into regional production networks and international trade flows, code ZP UNIRI 2/17.

fulfil a new role in the logistics era in the context of operating as parts of integrated global supply chain systems. As in Ng and Liu (2014), “a port-focal logistical system should be established, with ports being the focal points in the development of logistics and supply chains”.

The remainder of the paper is structured as follows. Second chapter introduces the literature related to the port integration into supply chains. Data description and methodology is explained in fourth chapter. Chapter five discusses the results and policy implications and the sixth chapter presents concluding remarks.

## 2 Literature Review

The supply chain integration has become a major area of research, gaining increasing popularity, especially in the last two decades. Much work has been done on the analysis of the changing role of ports in supply chains (Carbone and Martino, 2003, Marlow and Paixão Casaca, 2003, Bichou and Gray, 2004, Notteboom and Rodrigue, 2007, Song and Panayides, 2008, Panayides & Song, 2009, Woo, Pettit, Baresford, 2013, Loh and Thai, 2015, Bartholdi, Jarumaneeroj and Ramudhin 2016). Many authors emphasized the importance of port to integration in the supply chains, such as Bichou & Gray (2004) who state that the role of port outpace the simple function of transshipment and that ports became a place for value added logistics. Panayides & Song (2009) argue that ports should grow from the traditional functions of facilitating loading and discharging operations in order to become links in a complex logistics chain, hence the part of a global distribution network. According to Radhika (2012), the expansion of global supply chains changes the traditional role of ports from providers of transshipment services to an efficient distributor of products across the supply chain and integrated logistics service providers. Finally, Zuidwijk (2015) concludes that as global supply chains are becoming more complex, ports need to act as central nodes in organizational and information networks and not only be global hubs in logistics networks.

Nonetheless, in order to understand the port integration in supply chain it is important to define supply chains and the concept of the supply chain integration. As in Bichou and Gray (2004, p. 48) “supply chain is defined as a set of firms that pass materials forward; an alignment of firms that brings goods or services to market; or a network of organizations that, through upstream and downstream linkages, produce value in delivering products or services to the ultimate consumer”. According to Ng and Liu (2014), in order to integrate in supply chains, ports have to improve their connections with hinterlands, and inland transport and logistics infrastructures. Thus, ports have to start to provide more diversified, and value-added services rather than just cargo loading and unloading and have to orient more to users from various industrial sectors, not just shipping lines. In 2008, Song and Panayides identified six parameters which indicate port integration

in global supply chain such as the “use of technology for data sharing”, “relationships with shipping lines”, “value added services”, “relationships with inland transport providers”, “transport mode integration” and “channel integration practices and performance”. In the later research Panayides & Song (2009) made further contribution to the field by empirically developing measures of seaport integration in global supply chains. Previous six parameters are aggregated into four “terminal supply chain integration (TESCI)” parameters, including ICT systems, value-added services, multimodal systems and operations, and supply chain integration practices. Their results indicate that the ICT system and supply chain integration practices have the most important impact in the supply chain integration.

Although this topic is highly relevant, there is a gap in the literature focusing on the NAPA ports integration in the supply chain. Port integration is highly important for small ports such as NAPA ports in order to become competitive and enhance its performance. Trupac and Twrdy (2014) analyzed the competitiveness of Port of Koper through supply chain integration. Authors state that the vision of the management of the Port of Koper is to become the most important logistic center for Central and Eastern European countries through the inland connection and ongoing regional center projects. Authors state that for a port, the inland part is as important as the sea part because the part is always standing within a supply chain network. Furthermore, Prah and Kramberger (2014) were studying how do port-cities integrate port and urban functions in the case of port-city of Koper using spatial analysis with GIS tools. Their results show that urban and port functions in Koper are clustered, with highest density of port functions in newer area of central activities east of the old town. As far as we know, there was no research focusing on NAPA ports in the context of supply chain integration. Thus, in this paper we investigate the integration of NAPA ports in the supply chain.

## 3 North Adriatic Ports (Port of Rijeka, Port of Koper, Port of Trieste)

The North Adriatic ports are positioned in the northern part of the Adriatic Sea, which penetrates deep into the center of the Europe, providing the cheapest maritime route from the Far East, via Suez, to Europe (NAPA, 2011). NAPA ports present a significant hub in the sea transport of Central and East European countries.

### 3.1 Port of Rijeka

As Croatia joined the European Union, the market position of the Port of Rijeka and Rijeka Gateway became comparable with other competitive ports and gateways (Perić Hadžić, Župarić, Đeverlija, 2016). The main activities of Port of Rijeka are traditional port activities such as loading, unloading, transshipment, warehousing, trans-

port of general cargo, timber, liquid and bulk cargo, grain cargo, cattle, fruits, wheat, various crops, docking and undocking ships etc. (Perić Hadžić, Župarić, Đeverlija, 2016). However, Port of Rijeka together with other members of supply chain offers other activities like transshipment of goods, warehousing, servicing covering and insuring cargo, transport vehicles and many others. All those activities indicate that Port of Rijeka is integrating in the supply chain, however on the low level. The Port of Rijeka is equipped to handle all types of goods. The terminals of Port of Rijeka are: General Cargo Terminal, Grain Terminal, Liquid Cargo Terminal, Container Terminal Brajdica, Dry Bulk Cargo Terminal, Bakar Goranin Ro-Ro Terminal, Škriljevo Terminal, Raša Bršica Terminal, Passenger Port Terminal (Port of Rijeka, 2017). In 2017 the Port of Rijeka achieved the total throughput of up to 12.615.066 tons of handled cargo. The container terminal handled 249.975 TEU which is approximately 40% more compared to 2007. Although the total throughput, especially container traffic increased in the last ten years, the Port of Rijeka is lagging behind the Port of Koper primary because its specific position in the city center and poor connection with the hinterland, secondly it doesn't use advanced ICT system. Because of those two parameters it's not able to fully adapt supply chain integration practices. Another obstacle which makes the port less competitive is the disconnection with the Adriatic Baltic corridor, mainly Port of Rijeka unlike the rest of NAPA ports is the only one which is not included in the Adriatic Baltic corridor which is one of the most important trans-European road and railway axes in Central Europe. "The corridor runs from the Baltic ports of Gdansk, Gdynia, Szczecin and Świnoujście in the north, to the Adriatic ports of Koper, Trieste, Venice and Ravenna in the south, taking in the industrial regions of Central and Southern Poland, before straddling the Czech, Slovakian and Austrian/Slovenian borders on its way south to Italy and Slovenia" (European Commission, 2017).

### 3.2 Port of Koper

The Port of Koper is the appropriate equipped for handling various types of goods such as general cargo, livestock, containers, cars and Ro-Ro, timber, dry bulks, ores and coal, liquid cargo, alumina, and cereals (Prah, Kramberg, 2014). In 2017 the Port of Koper achieved the total traffic of up to 23.366.959 tons of handled cargo. The container terminal handled 911.528 TEU (Port of Koper, 2017). The traffic in transit has the dominant share whereas the exports and imports through the Port of Koper represent a minor share. Port of Koper performs most of its services for hinterland countries like Austria, Hungary, Slovakia, Czech Republic, Poland, southern Germany, Italy, Switzerland, Croatia, Bosnia and Herzegovina, Serbia and Ukraine and Russia (Trupac, Twrđy, 2014). The Port of Koper Authority plans to focus on the cooperation of the Port of Koper with the existing inland terminals (logistic centers) and to establish new ones which would be po-

sitioned between Eastern and Western Europe, thus to adapt the supply chain integration practices.

### 3.3 Port of Trieste

The Port of Trieste terminals are equipped with modern technology for handling, transportation and storage at the service of all types of cargo: containerized cargo, fruit and vegetables, coffee, grains, metals, engines, steel and chemical products, timber, dry and liquid bulk, crude oil and derivative products. However, the oil terminal, which supplies the main refineries in Central Europe, is the biggest generator of traffic in the Port of Trieste.

In 2016/2017 the Port of Trieste achieved the total traffic of up to 61.955.405 tons of handled cargo, however, the container terminal handled 616.156 TEU (Port of Trieste, 2017).

Rail services and links play a crucial role in the logistics chain centering around the Port. Actually, Trieste is the most important railway port in Southern Europe, with 70 km of track serving all the docks and making it possible to assemble freight trains directly in the various terminals. (Port of Trieste, 2017).

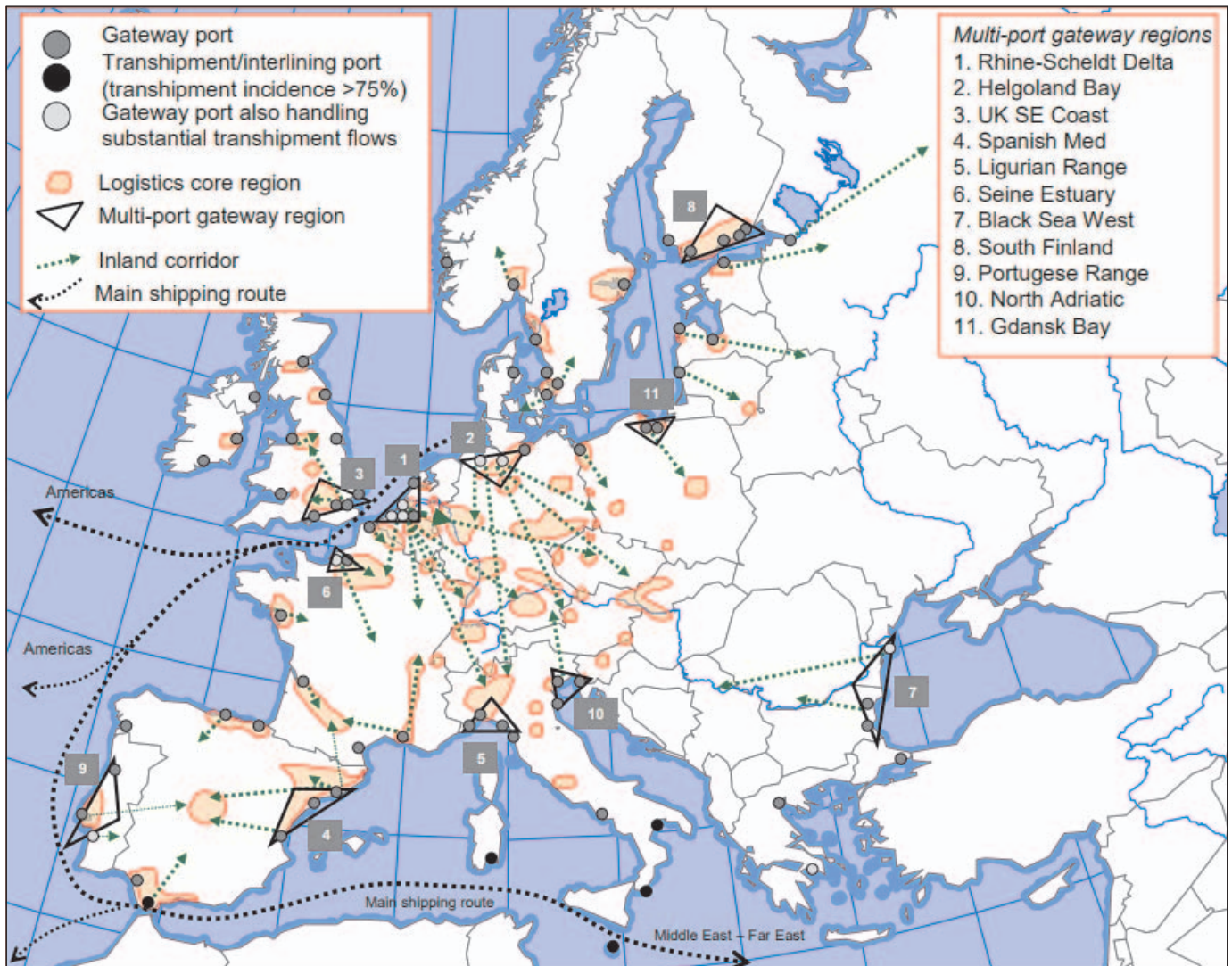
Although, as mentioned above, the position of NAPA ports provides the cheapest/shortest sea route from the Far East to Europe, the cargo to central and eastern Europe is still sent to the western European ports of Rotterdam, Antwerp and Hamburg as showed in the Map 1. The Multiport gateway regions number 1, 2 and 3 present the main shipping routes and are the best equipped and developed logistics centers, highly integrated in the global supply chains.

Furthermore, all the Northern Adriatic ports are all small, which are, on one hand competing, and on the other hand, holding the position of common competition, acting as a gathered port system in relation to other traffic routes through where goods from Middle European countries are transported (Vilke, 2005: 85 in Naletina, Baković and Damić, 2017).

According to the theory mentioned in the second section of the paper, in order to port integrate in the supply chain it is important to satisfy four parameters, ICT systems, value-added services, multimodal systems and operations, and supply chain integration practices (Panayides & Song, 2009). The NAPA ports are still not ICT developed and do not fully exploit the supply chain practices. Among the above-mentioned NAPA ports, Port of Rijeka is dealing with the weak railway and road connections of the Port of Rijeka and insufficient low-quality facilities on the hinterland which disable the appropriate integration of the port in the supply chains.

## 4 Methodology and Data

As in Bichou and Gray (2004, p. 48) "supply chain is defined as a set of firms that pass materials forward; an alignment of firms that brings goods or services to mar-



Map 1 European Container port system and logistics core regions in the hinterland

Source: Notteboom, 2009

ket". The assumption of our research is that if the business cycle of all firms (classes) included in the port supply chain is correlated, it can indicate that the port is integrated in the supply chain, thus in our research we calculate the correlation between classes within port regions. As the proxy variable for business cycle we use sales growth. We calculate the difference between two successive periods to obtain sales growth of all classes included in the sample.

Our sample includes data for 939 firms aggregated by port regions and group/class for three North Adriatic ports (Port of Rijeka, Port of Koper and Port of Trieste). We distinguish between 9 classes within 5 groups (3 divisions) from Section H. Firm-level data for firms registered in one of the 9 classes was obtained from Bureau van Dijk Amadeus database and include the period from 2007 to 2016. The data of the firms are aggregated in the following classes: 4920 Freight rail transport, 4941 Freight transport by road, 4942 Removal services, 5020 Sea and coastal freight water transport and 5210

Warehousing and storage, 5221 Service activities incidental to land transportation, 5222 Service activities incidental to water transportation, 5224 Cargo handling, 5229 Other transportation support activities. Table 1 contains descriptive statistics of all used variables expressed in relative values.

The first column in Table 1 presents the NAPA port regions. As we are separately analyzing the integration of each NAPA port in the supply chain, we aggregated firms on the regional level distinguishing it between divisions, groups and classes (column 2-4). The fifth column describes the type of business in each class. The column "Mean" shows the negative sales growth on average in the case of the firms within class 4941 and 5254 in Port of Koper region and Port of Trieste region, while in the case of Port of Rijeka the sales growth is on average positive in both classes. However, the negative sales growth on average in Port of Rijeka is noted in classes 4920 and 5210. When we look at the class 5020, Sea and coastal freight

Table 1 Descriptive statistics

Region	Division	Group	Class	Description	Obs	Mean	St. Dev	Min	Max
Port of Koper Region	49	49.2	4920	Freight rail transport	9	119.8584	268.5747	-10.23407	829.0092
		49.4	4941	Freight transport by road	10	-13.784	25.17791	-75.72681	10.83841
			4942	Removal services	6	71.73876	83.72337	2.106504	226.2048
	50	50.2	5020	Sea and coastal freight water transport	12	197.7186	645.2008	-57.85249	2231.252
	52	52.2	5210	Warehousing and storage	9	4.042512	31.12741	-32.9128	66.66697
			5221	Service activities incidental to land transportation	10	1.997031	34.87235	-52.01688	66.20849
			5222	Service activities incidental to water transportation	9	.2582218	16.1831	-24.19557	22.09518
			5224	Cargo handling	10	-19.13167	40.62202	-91.73843	20.37382
			5229	Other transportation support activities	11	86.52948	321.0666	-49.4055	1052.686
	Port of Rijeka Region	49	49.2	4920	Freight rail transport	1	-100	-	-100
49.4			4941	Freight transport by road	14	30.51587	52.40023	-7.97385	156.9057
			4942	Removal services	0				
50		50.2	5020	Sea and coastal freight water transport	10	126.1955	257.7704	-24.45213	752.7847
52		52.2	5210	Warehousing and storage	11	-10.92855	37.02371	-42.88662	62.89154
			5221	Service activities incidental to land transportation	9	11.85707	82.27723	-71.62317	196.0074
			5222	Service activities incidental to water transportation	10	43.01936	154.1853	-38.37922	477.8665
			5224	Cargo handling	10	53.47553	198.4592	-23.26472	617.6681
			5229	Other transportation support activities	11	679.6854	2278.877	-100	7549.987
Port of Trieste Region		49	49.2	4920	Freight rail transport	9	26.56518	54.19914	-24.88138
	49.4		4941	Freight transport by road	10	-12.60955	22.87041	-48.7287	21.08956
			4942	Removal services	0				
	50	50.2	5020	Sea and coastal freight water transport	10	2.152431	57.49731	-84.84225	147.0943
	52	52.2	5210	Warehousing and storage	10	-6.59662	23.44761	-39.61627	20.50834
			5221	Service activities incidental to land transportation	12	782.2876	2736.621	-66.15634	9471.88
			5222	Service activities incidental to water transportation	9	5.204473	11.69586	-11.64467	24.50937
			5224	Cargo handling	10	-.9655494	21.63837	-42.80947	31.29194
			5229	Other transportation support activities	10	7.309307	20.59237	-23.44369	56.59114

Source: Author's calculation

water transport, the average sales growth is the highest in the Port of Koper, however, the standard deviation is also the highest between the firms in the class 5020 in the Port of Koper.

## 5 Results and Discussion

The Table 2 represents the coefficients of correlations between all the classes included in the Port of Rijeka supply chain. However, the coefficients are rather negative than positive indicating the negative relationship between classes. The only positive but weak correlation is between classes 5210, Warehousing and storage and 5229, Other transportation support activities. These results are showing that the classes are rather disintegrated than integrated.

In table 3 are presented coefficients of correlation between classes in the Port of Koper region. In the contrast of Port of Rijeka, classes in Port of Koper are correlated. The highest correlation can be seen between classes 5210, Warehousing and storage and 5222 Service activities incidental to water transportation. The classes 4941, Freight transport by road and 4942, Removal services are positively but weakly correlated. However, this can be an indicator that Port of Koper, in this situation is more integrated in the supply chain than Port of Rijeka.

In the case of Port of Trieste, the situation is similar to the Port of Koper and Rijeka. There is no evident strong correlation between classes. The results indicate there is no evident integration when analysing the sales growth of firms included in port operations.

**Table 2** Correlation (Port of Rijeka Region)

	4941	5020	5210	5221	5222	5224	5229
4941	1.0000						
5020	-0.4179	1.0000					
5210	-0.1114	-0.1691	1.0000				
5221	-0.4804	-0.3161	-0.1712	1.0000			
5222	-0.4416	-0.5076	-0.0284	-0.0544	1.0000		
5224	-0.2900	-0.0039	0.0484	-0.2140	-0.1482	1.0000	
5229	-0.00914	-0.5748	<b>0.3212</b>	<b>0.6036</b>	-0.1209	0.0741	1.0000

Source: Author's calculation

**Table 3** Correlation (Port of Koper Region)

	4920	4941	4942	5020	5210	5221	5222	5224	5229
4920	1.0000								
4941	-0.1158	1.0000							
4942	<b>0.3847</b>	<b>0.6088</b>	1.0000						
5020	-0.0623	-0.0039	-0.4275	1.0000					
5210	-0.4856	-0.4544	-0.6079	-0.4131	1.0000				
5221	0.1885	-0.3626	-0.4246	-0.3026	<b>0.5253</b>	1.0000			
5222	-0.6634	-0.6184	-0.7011	-0.1662	<b>0.8623</b>	0.2571	1.0000		
5224	0.1509	<b>0.4962</b>	0.1497	<b>0.3178</b>	-0.2329	-0.3908	-0.4552	1.0000	
5229	-0.6382	-0.0346	0.0761	-0.2408	0.1272	-0.2273	0.4557	-0.7013	1.0000

Source: Author's calculation

**Table 4** Correlation (Port of Trieste Region)

	4920	4941	5020	5210	5221	5222	5224	5229
4920	1.0000							
4941	-0.1397	1.0000						
5020	-0.2873	-0.5555	1.0000					
5210	-0.0819	0.2716	0.3175	1.0000				
5221	-0.3071	<b>0.4698</b>	0.0309	<b>0.5840</b>	1.0000			
5222	0.3577	-0.0813	-0.5014	-0.5438	-0.4175	1.0000		
5224	0.3937	-0.1179	-0.0198	-0.3116	0.1932	0.3861	1.0000	
5229	0.3169	-0.4529	-0.2043	-0.5775	-0.2410	0.3494	0.2222	1.0000

Source: Author's calculation

Figure 1 represents the graphical analysis of the growth sales of each class in the port of Rijeka, Koper and Trieste regions.

The graphical analysis is showing us the ambiguous results. In the Port of Rijeka, the classes are oscillating similarly except in the case of warehousing where we notice the growth, while in the case of the Port of Trieste region the classes are not synchronized. In the case of Port of

Koper region its noticeable the decline in cargo handling and the growth in the class Service activities incidental to land transportation. These results confirm the Decruet and Horts (2009) statement that there is a higher proportion of transport integration in northern Europe than “in southern Europe which is the historical and geographical setting in which northern European ports developed over time”. NAPA ports are weakly connected with the hinterland which is important in the distribution of intermodal operators and forwarders.

### 6 Conclusion and Policy Implication

The new role of the ports and its integration into the supply chain is taking the attention in the last two decades. Today the ports are not just considered as the traditional regional gateways, but rather as the place where important value adding, and logistics activities are taking place. Ports today serve as a logistics centers and affect the supply chain processes and patterns thus being the integral part of a complex supply chains. The port integration is relevant because the port productivity and performance are related to the effectiveness of the whole supply chains (Panayides & Song, 2009). As the European Union is enlarging eastwards, there is the opportunity for North Adriatic port to take their market position and become more competitive in relation to North European ports. This can be done by the by the application of supply chain integration practices. The results of our analysis are however indicating that the NAPA ports are not yet highly integrated into the supply chain. According to the theory, the NAPA ports should improve their facilities, port-hinterland connections and ICT system in order to integrate in the supply chain. This paper contributes to the area that is highly topical and relevant to developments taking place in maritime logistics, transportation and NAPA port development. Although the NAPA ports are introducing new connectivity projects, especially Port of Rijeka, there is much to be done in order to integrate in supply chain. Finally, ports can not integrate by them self, which mean that all stakeholders involved in port/transport operation must act as the common system, integrating together and this is mainly important for the transport policy makers. This paper provides the conceptual framework and outline the significance of this investigation for port operators, shipping lines, forwarders and other stakeholders.

### Acknowledgement

This work has been fully supported by the University of Rijeka under the project ZP UNIRI 2/17. An earlier version of this paper was presented at the International Multidisciplinary Conference on Sea, Transport and Logistics 2017, organized by the Port of Rijeka Authority and the Faculty of Maritime Studies in Rijeka. The authors are thankful to the conference organizers, paper reviewers and participants for their valuable suggestions which shaped the better version of the paper.

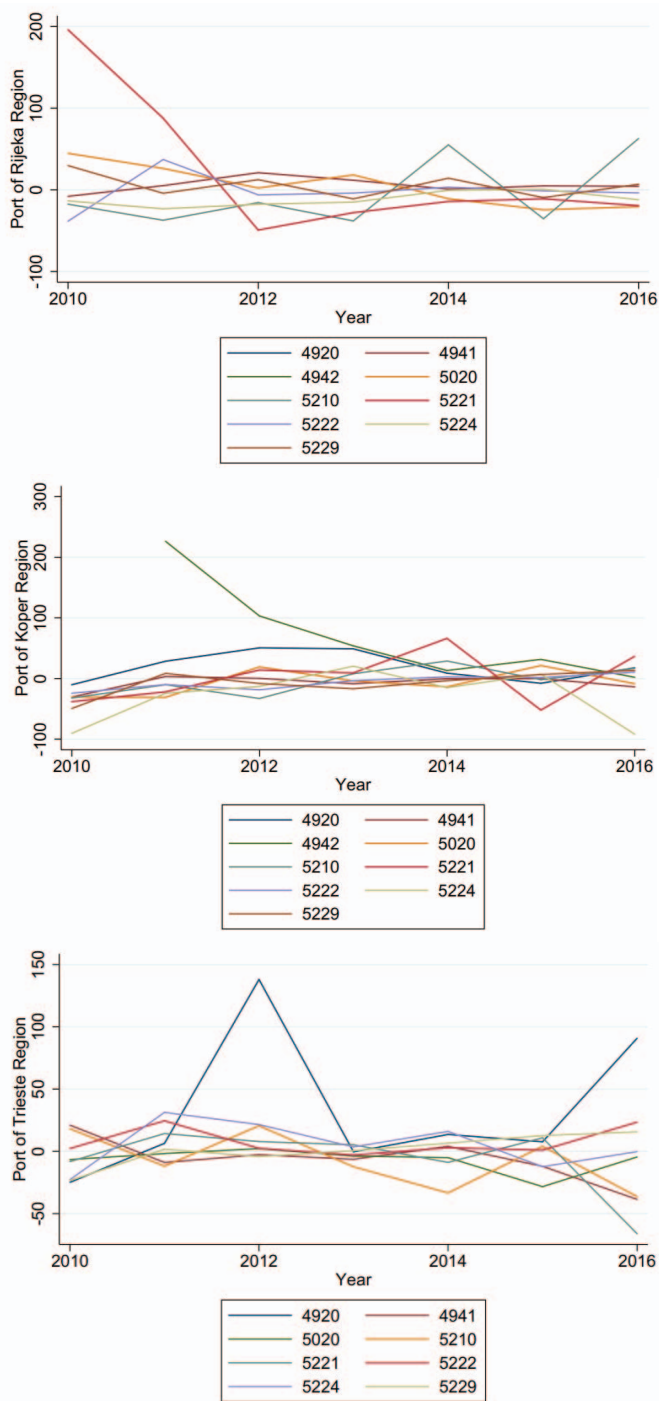


Figure 1 Sales growth in ports regions on class level in the period 2007-2016 (%)

Source: Author’s calculation



## References

- [1] Bartholdi III, J.J., Jarumaneeroj, P., Ramudhin, A.: A new connectivity index for container ports, *Maritime Economics & Logistics*, Vol. 18, pp. 231-249, 2016.
- [2] Bichou, K., Gray, R.: A logistics and supply chain management approach to port performance measurement, *Maritime Policy & Management*, Vol. 31, pp. 47-67, 2004.
- [3] Bureau van Dijk AMADEUS, 2017, <http://amadeus.bvdep.com> (15.11.2017).
- [4] Carbone, V., Martino, M. D.: The changing role of ports in supply-chain management: An empirical analysis, *Maritime Policy & Management*, Vol. 30, pp. 305-320, 2003.
- [5] Ducruet, C., Van der Horst, M.: Transport Integration at European Ports: Measuring the Role and Position of Intermediaries, *EJTIR*, Vol. 9 (2), pp. 121-142, 2009.
- [6] Loh, H.S., Thai, V.V.: Cost Consequences of a Port-Related Supply Chain Disruption, *The Asian Journal of Shipping and Logistics*, Vol. 31 (3), pp. 319-340, 2015.
- [7] Marlow, P. B. & Paixão Casaca, A. C.: Measuring lean ports performance, *International Journal of Transport Management*, Vol. 1, pp. 189-202, 2003.
- [8] Naletina, D. Baković, T., Damić, M.: Competitiveness of Port of Rijeka, *Proceedings of the International Conference Theory and Applications in the Knowledge Economy*, pp. 682-696, 2017.
- [9] NAPA Container Market Study, MDS, Transmodal limited, 2011, <http://www.its-napa.eu>, 02.11.2017.
- [10] Notteboom, T. Economic analysis of the European seaport system, <https://www.espo.be/media/espopublications/ITMMAE-economicAnalysisoftheEuropeanPortSystem2009.pdf>, 2009.
- [11] Notteboom, T., Rodrigue, J.-P.: Containerisation, Box Logistics and Global Supply Chains: The Integration of Ports and Liner Shipping Networks, *Maritime Economics and Logistics*, Vol. 10, pp. 152-174, 2008.
- [12] Notteboom, T., Rodrigue, J.-P.: Re-Assessing Port-Hinterland Relationship in the Context of Global Commodity Chains, 2007, Ports, cities, and global supply chains, Routledge, pp. 51-66, 2007.
- [13] Ng, A. K. Y., Liu, J. J.: Port-Focal Logistics and Global Supply Chains, *Palgrave Macmillan*, 2014.
- [14] Panayides, P. M. & Song, D.-W.: Port integration in global supply chains: Measures and implications for maritime logistics, *International Journal of Logistics: Research and Applications*, Vol. 12, pp. 133-145, 2009.
- [15] Perić Hadžić, A., Župarić, L., Đeverlija, S.: Analysis of the multiplicative effects of the Port of Rijeka, *Scientific Journal of Maritime Research*, Vol. 30, pp. 113-119, 2016.
- [16] Ports of Rijeka, 2017, <http://www.portauthority.hr/en/infrastructure/terminals> (20.11.2017)
- [17] Port of Koper, 2017, <https://www.luka-kp.si/eng/311> (20.11.2017)
- [18] Port of Trieste, 2017, [http://www.porto.trieste.it/wp-content/uploads/2017/04/Sintesi\\_Statistiche\\_-ESPO\\_Gennaio-Dicembre\\_2017.pdf](http://www.porto.trieste.it/wp-content/uploads/2017/04/Sintesi_Statistiche_-ESPO_Gennaio-Dicembre_2017.pdf) (20.11.2017)
- [19] Port of Trieste <http://www.porto.trieste.it/eng/port/rail-intermodal-network> (20.11.2017)
- [20] Prah, K., Kramberger, T. Studying integration of port and urban functions in port-city of Koper, using spatial analysis techniques and GIS tools, 2014, (pdf) <http://www.projet-devport.fr/en/PDF/21.pdf>.
- [21] Radhika, D.: The new role of seaports as integral parts of global supply chains, *EXCEL International Journal of Multi-disciplinary Management Studies*, Vol. 2 (4), pp. 131-144, 2012.
- [22] Song, D.-W., Panayides, P.M.: Global supply chain and port/terminal: integration and competitiveness, *Maritime Policy and Management: The flagship journal of international shipping and port research*, Vol. 35 (1), pp. 73-87, 2008.
- [23] Woo, S.-H., Pettit, S.J., Beresford, A.K.C.: An assessment of the integration of seaports into supply chains using a structural equation model, *Supply Chain Management: An International Journal*, Vol. 18 (3), pp. 235-252, 2013.
- [24] Trupac, I. and Twrdy, E.: More Competitiveness of the Port of Koper through Supply Chain Integration, *Promet – Traffic&Transportation*, Vol. 22 (4), pp. 251-257, 2014.
- [25] Twirdy, E., Batista, M.: Port Competition in North Adriatic, *Naše more*, Vol. 61 (3-4), pp. 47-51, 2014.
- [26] Vilke, S.: Konceptija razvitka sjevernojadranskih luka Rijeke, Kopra i Trsta. *Pomorski zbornik*, Vol. 43 (1), pp. 85-112, 2005.